

Mapping Services

Many sewer, stormwater, and water systems need better maps and a way to more efficiently manage their infrastructure. To address these needs, New York Rural Water Association offers mapping services to our members at reduced rates.

We have assisted many systems all across New York with mapping of their infrastructure. If you would like to learn more or want to find out how much it would cost, give us a call at 1-888-NYRURAL and ask for Steve Winkley, ext. 17.



NYRWA generates a series of system maps.



NYRWA also provides all maps in digital format.

New York Rural Water Association
P.O. Box 487
75 Bender Boulevard
Claverack, NY 12513
Phone: 518-828-3155
Fax: 518-828-0582
Website: www.nyruralwater.org



New York Rural
Water Association

System Mapping Services



Our Mission:

*Providing Our Members with the
Expertise and Training to Meet
Present and Future Challenges.*

Do You Have Accurate and Up-to-Date System Maps?



Digital mapping can consolidate data from many project drawings.

Over two-thirds of water and sewer systems informed New York Rural Water Association (NYRWA) that they do not have accurate or reliable maps.

These results are not surprising considering that most smaller

systems are older and have been subject to many additions and replacements over the years. Some systems have no reliable maps at all, maybe just hand written sketches. Others may have scattered maps from various projects completed over the decades. What is needed is a comprehensive set of current maps and documents that detail the location and attributes of system assets. Also needed is a way for personnel to effectively access and manage these system assets.

The Solution

In response to the needs of small systems, NYRWA is pleased to provide our members with reduced rate mapping services. These services enable smaller sewer, stormwater, and water systems to afford accurate, up-to-date maps.

NYRWA uses the Trimble® GeoXT™ Global Positioning System (GPS) platform to map system features such as valves, hydrants, manholes, catch basins, etc. to an accuracy of up to less than one foot. Alternatively, we can also digitally scan existing system maps. Locations are then input to ESRI® ArcGIS® software to enable map production and creation of a Geographic Information System (GIS).

GIS: A Way to Manage Systems Better

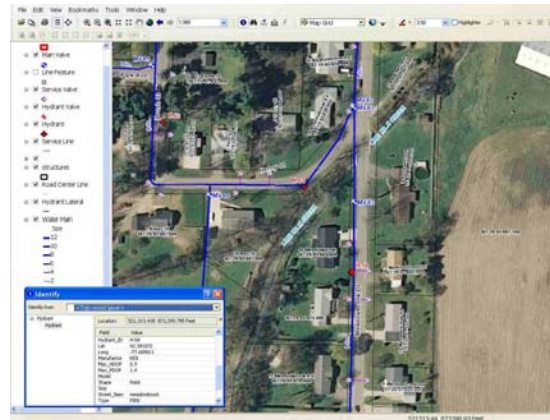
A Geographic Information System (GIS) is a method of storing, analyzing, and managing data that are linked to locations. Although GIS software can be used to make printed maps, it is much more.

Operators and managers of sewer, stormwater, and water systems can interact with GIS maps. They can point and click on a given map feature and find out more about it. For example, a water distribution operator can click on a system valve on a map and find out when it was installed, what size it is, when was it last exercised, how many turns it takes to close, in what direction, etc.

Users can create custom GIS maps based upon different map features. For example, a system manager can plot the locations of all system features installed since a certain date, made by a certain manufacturer, etc.

Another advantage of a GIS map is that it can be panned and zoomed to pinpoint the location of a chosen feature. In addition, personnel can print out as many copies as they need before they go into the field.

GIS data can also be used with other data such as customer information. For example, perhaps a system needs to conduct hydrant flushing. Using GIS, an operator can identify what customers in the vicinity could be impacted.



NYRWA provides systems with a customized GIS viewer with all system features, parcel lines, orthoimagery, etc.



The Trimble® GeoXT™ handheld GPS unit used by NYRWA can offer sub-foot accuracy depending upon local conditions.

The NYRWA Approach

Give us a call and let us know your situation. Based upon your system's characteristics and the number of features to be mapped, we will let you know the costs.

If our quote is accepted, NYRWA conducts GPS field mapping activities, digitizes any existing maps, and proceeds with producing system maps.

We will setup a custom GIS for the system and provide the free ESRI® program ArcReader. NYRWA can assist system personnel with the installation and use of this GIS viewing program. Also provided are spreadsheet files of system assets and digital map files.



Contact us to learn more:
1-888-NYRURAL
Steve Winkley—ext. 17
Winkley@nyruralwater.org

New York Rural Water Association
P.O. Box 487
75 Bender Boulevard
Claverack, NY 12513

Phone: 518-828-3155
Fax: 518-828-0582
Website: www.nyruralwater.org